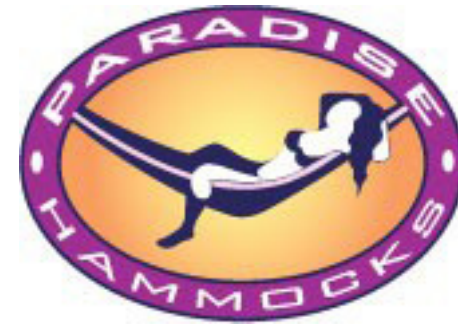


Please note: one length of nautical rope measuring 8 metres approximately has been included, rather than two sections. This is to allow you to cut it into two sections of different length if the points to which you are attaching your fixings are not equidistant.

Please singe the ends of the rope to prevent fraying. If you are in doubt as to the suitability of the exact location into which you are securing your fixings please feel free to e-mail or telephone us for advice.

**DISCLAIMER:**

**It must be stated that we cannot take responsibility for incorrect fitted fixings and any damage or personal injury incurred will not be accepted as being our liability. If in doubt please seek a professional opinion as to the suitability of your fixing points.**

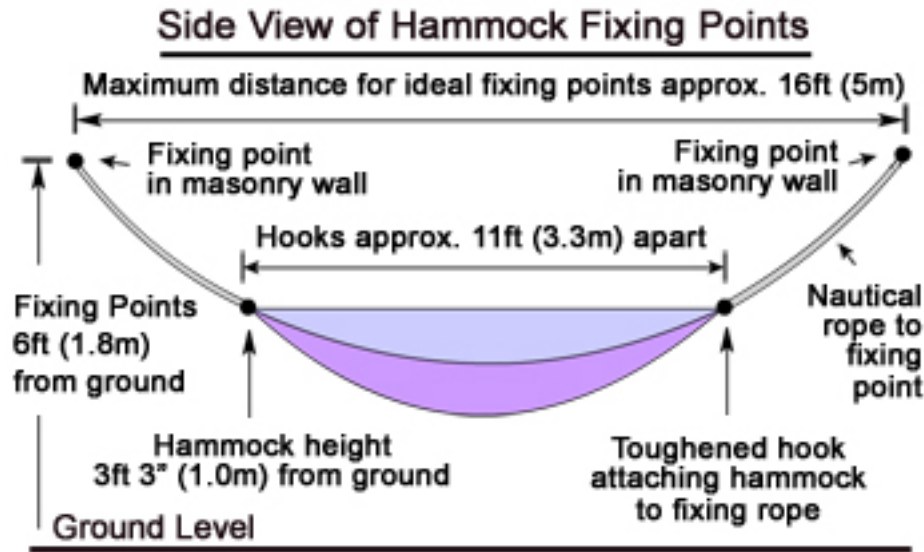


# Masonry Fixing Kit

1st Floor  
The Gatehouse  
Littlegate Road  
Paignton  
Devon TQ3 3AZ  
United Kingdom  
Tel: 44 (0) 1803 666006  
**Website: [www.paradisehammocks.co.uk](http://www.paradisehammocks.co.uk)**  
**E-mail: [sales@paradisehammocks.co.uk](mailto:sales@paradisehammocks.co.uk)**

## PARADISE HAMMOCKS HANGING TIPS

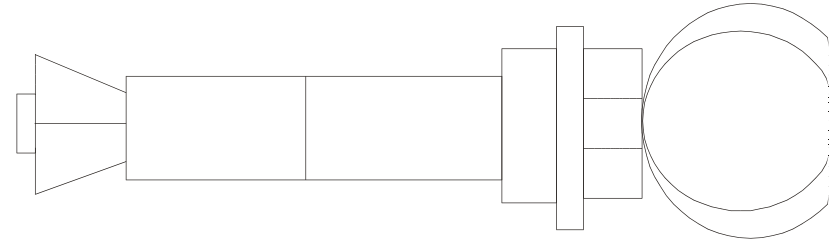
Hammocks are a great and fun way of relaxing especially when hung safely and correctly. Wherever you choose to hang your hammock and whatever method you decide to use, the key factor is to check that it is secure by slowly easing your weight onto the hammock.



Paradise hammocks are a very versatile and portable piece of kit and it's worth finding a few different places where it can be hung, to find its perfect equilibrium. For example, if it is hung too taut or too slack you will not experience its full potential. The ideal position for the hammock hooks are approximately 11ft (3.3m) apart and 6ft (1.8m) high giving the hammock a nice loose arc.

A length of nautical rope should be attached to the hammock hooks and the arc should continue up to the fixing points. The fixing points at each end do not necessarily have to be 11ft (3.3m) apart as you can use the nautical rope from the hooks to extend the arc. It's also worth noting that the fixing points do not have to be at the same height. For example, one end could be at 11ft (3.3m) high and the other at 8ft (2.4m) high – just make sure that the hammock hooks are at equal height.

## HANGING YOUR HAMMOCK (BRICKWORK, MASONRY WALLS, STONE)



The easiest way to support your Paradise hammock from brickwork, concrete or stone walls is to fix in a M8 expansion bolt (not suitable for cement block type walls unless reinforced). This is the most commonly available expansion bolt. To fix the bolt you will need a hammer action power drill, a 12mm and a 4-6mm masonry drill bit. If you are drilling into brickwork you should first locate the centre of the brick, as this is the strongest part. Once you have marked where your fixing point is going to be drill a small pilot hole with the 4-6mm drill bit and then enlarge it with the 12mm bit to accommodate the expansion bolt. Ensure that the bolt has not already been expanded, tap it into the hole and tighten the nut with an adjustable spanner until the bolt is gripping solidly.

Attach the nautical rope to the hammock hooks and fixing points and set desired height. Once attached, ease your weight onto the hammock and recheck the bolt – it will probably need to be retightened. Repeat this action a few times until the bolt is firmly secure. After a few weeks check the bolt is still snug in the fixing hole and tighten if required. Check the fixing bolts periodically to ensure they remain fit for purpose.

### **DON'T FORGET!**

We also supply wood fixing kits for beams or garden posts and self-supporting hammock stands. Remember that Paradise Hammocks are very versatile and can be hung almost anywhere in less than a minute! Check out our website for more info:

[www.ParadiseHammocks.co.uk](http://www.ParadiseHammocks.co.uk)